

Tracking an organization's physical assets can be an incredibly tedious task. It is prone to human error due to the lack of automation in this time-consuming and manual record-keeping process.

Asset labels are the key component in simplifying the identifying tracking, monitoring, and inventorying of a company's valuable physical assets.

Finally, a way to keep track of physical assets for any size business or industry.



Use for Loss Prevention, Accounting, Inventory Control and Maintenance Management

Wilmer has Asset Label solutions to meet the needs of any size organization in any environment.

Basic, "Property of" Labels: Ideal for small businesses and organizations simply wanting to keep loss to a minimum and deter theft. Personalize with your company's name and apply to your physical assets to identify as company property.

Numbered Labels: These labels are personalized with your company's name and also include a sequential number to help track specific items for inventory management control and accounting purposes.

Barcode & Numbered Labels: This solution, also personalized for your company, includes a barcode

and human readable number for easy input into accounting systems. Simply scan with a barcode reader and the asset is entered into your system quickly and efficiently (human readable numbers are included for times when a barcode reader is not available).

With nearly 30 barcode styles available, including QR codes*, Wilmer has an answer for your needs!

Stock, Sequentially Numbered Labels: Make unauthorized access to protected items easily detectable, heightening package or product security. Personalization is not available with this style label.

*Static QR Code only

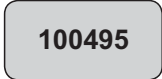
Wilmer's Asset Labels... designed to last as long as the item they are applied to.

- Unique sub-surface printing eliminates the need for over-laminates frequently applied to traditional asset labels. The only way the printing can be rubbed off is if the label is actually destroyed.
- UV inhibiting polyester film is used ensuring colors won't fade, even when used in an outdoor environment.
- Permanent adhesive is used to prevent removal

of labels. Apply to a variety of surfaces (e.g. plastics, glass, bare or painted metals).

Produced and sold in sheets, not rolls.

- Easier to store and keep safe.
- Available in 11" and 14" sheet lengths.
- Labels are available in up to four colors.
- Labels come in a variety of sizes and formats.
- Order as few as one sheet if necessary (minimum order applies).



800.4WILMER

(800.494.5637)

4wilmer.com

Sample Asset Management Solutions for business or industry.

Healthcare: Medical equipment and supplies are essential to the operation of a healthcare provider's office or facility. Asset Labels help prevent loss, improve tracking ability, and provide maintenance management records.

Education: Educational institutions can be a nightmare for tracking, assigning, and managing physical assets. With a large variety of property that is both portable and expensive, Asset Labels provide a simple, effective method to safeguard a school's possessions.

Government: Governments present a unique challenge in controlling and monitoring assets. Governments need to track both internal property such as computers and office equipment, and external property such as heavy equipment, portable radios, and street signs. Asset Labels make it possible to use a common platform to track both types of assets.

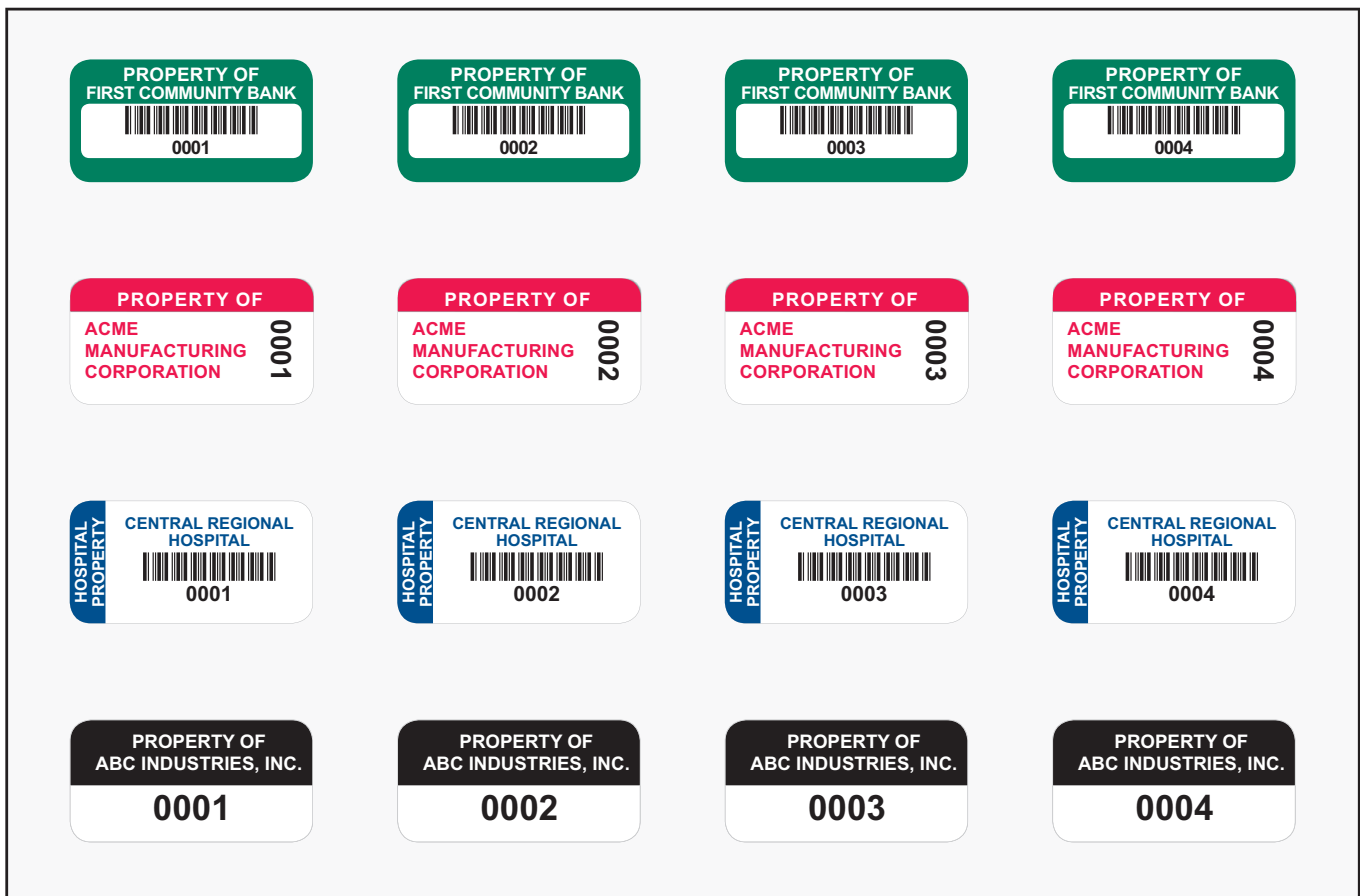
Utility: Durability is key in the utility industry. Often the assets of utility companies are exposed to the environment 24 hours

a day, come in contact with harsh chemicals, and have a high "wear and tear" factor. Asset Labels for this industry need to be as durable as the assets they are tracking.

Tool & Equipment Rental: These organizations have hundreds and thousands of pieces of equipment to inventory and track. Additionally, these applications are usually under the harshest of environments making durability of the upmost importance.

Manufacturing: Manufacturers need a method to control assets, track maintenance on equipment, and verify inventory, sometimes in the most severe of environments (e.g. extreme temperatures, chemicals, and abrasives). Asset Labels need to withstand the rigors of manufacturing and also be able to integrate with the fast paced, technology driven environment.

General Business and Office Environments: Laptops, computers, projectors, monitors, copiers, printers, phones, and may other items in the everyday office setting need to be identified, tracked, and controlled.



See our complete product line
visit, 4wilmer.com or call,
800.4WILMER (800.494.5637)